



Be Well



Shop Well



Play Well



Eat Well



Get Well

# COVENANT PARK





# COVENANT PARK

72-acre medical anchored regional mixed-use development at the intersection of Marsha Sharp Freeway & 82nd Street

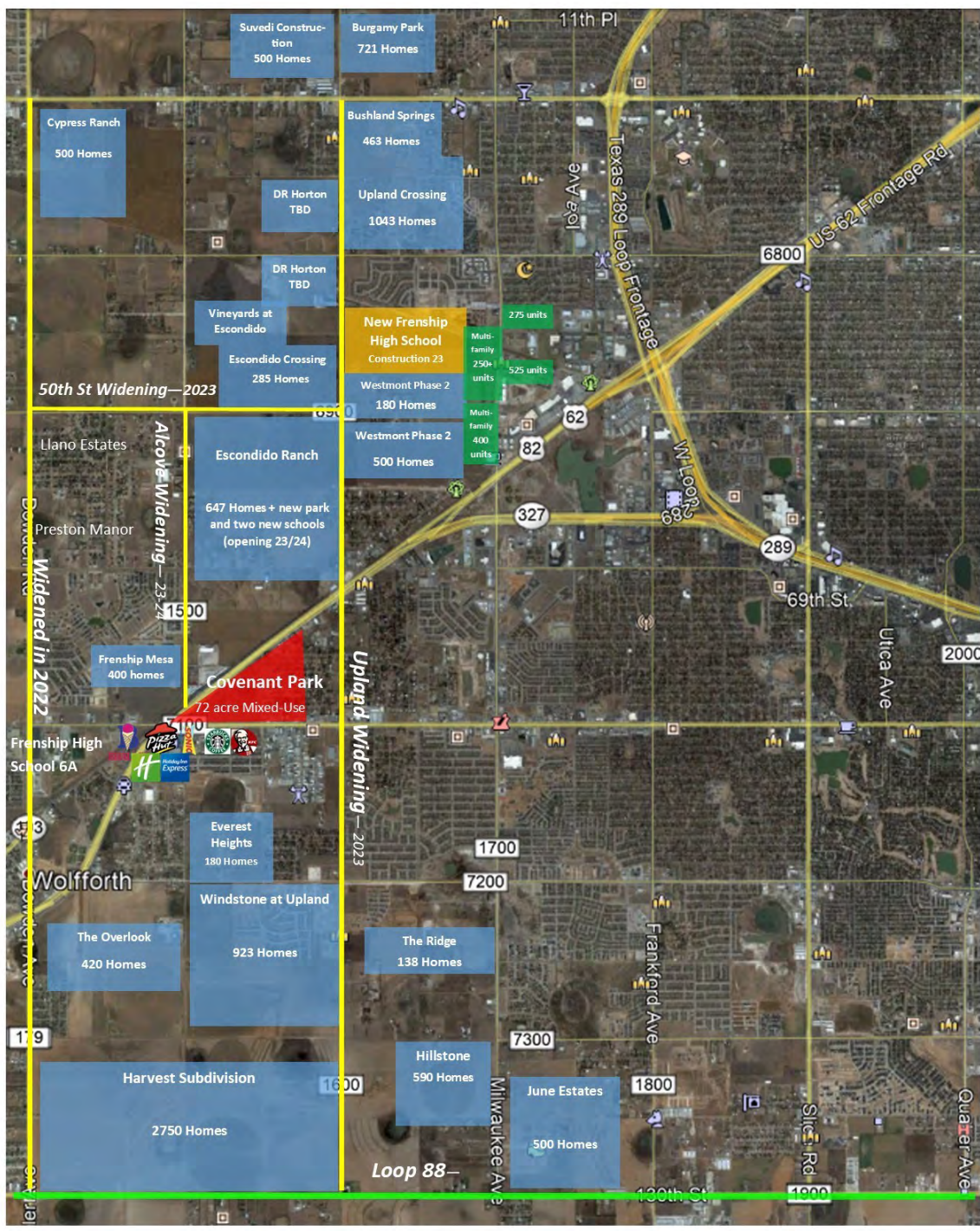
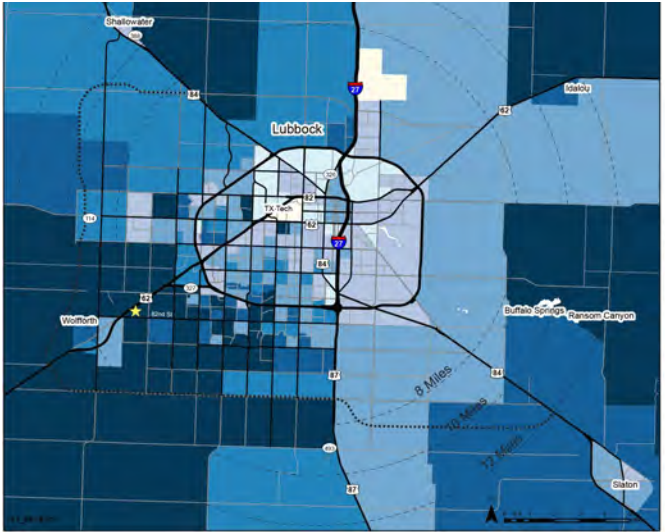
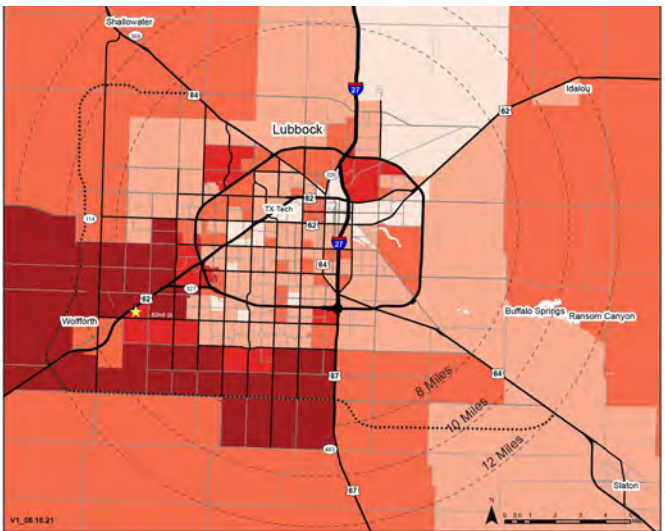
Construction is completed on Phase 1 of the development: the hospital, main roadways, and infrastructure. As one of several unique anchors, the hospital employs over 400 people and serves patients from up to 150 miles away. Schulman's Movie Bowl Grille is coming to Covenant Park. Breaking ground in 2nd quarter 2024, the approximately 80,000 square foot facility will include movie theaters, bowling, indoor pickleball courts, an arcade, full restaurant, and a two-story brewery. SMBG will also share a green space with Covenant Park's town square. This green space will be a place to host concerts and other live music events, as well as movie nights, game watching parties, yoga in the park, and more. Phase 1 of the retail is under construction with leasing is underway for additional retail and restaurant components. The development will also feature contemporary higher end multi-family and senior housing.

Located at a high-traffic intersection, Covenant Park is a unique lifestyle development, with a focus on health and wellness, while providing a destination for shopping, family dining and entertainment. The combination of these will allow the center to become a local landmark and draw customers from across the region.



# Located in the Direct Path of City's Growth

Covenant Park is located west of the Milwaukee corridor and off Upland Avenue, the fastest growing area in the region with more than 13,000 new homes either under construction or planned to be built. It is located two minutes east of Frenship, the city's largest high school. Construction has begun on a new high school, as well as a new elementary and middle school across the freeway.



Southeast Aerial

COVENANT PARK



North Aerial

COVENANT PARK



Northwest Aerial

COVENANT PARK



Preston Manor (Wolfforth) Aerial

COVENANT PARK



# Lubbock Economy

The Lubbock Metropolitan Area, the 10th largest in Texas, has a population of 322,257 and has grown at over 10% since 2010. Lubbock is the largest medical hub between Dallas and Albuquerque and has an extremely large and diverse agriculturally based economy. It has strong manufacturing, wholesale and retail trade, healthcare, education and government sectors. Lubbock's location and access to transportation makes the city a hub for regional warehousing and distribution, as well as the major retail trade center for retail trade area of more than 645,000 people. Lubbock is the home to three universities and one community college, including Texas Tech University, which has surpassed 40,000 students. The healthcare and social assistance sector is a vital part of the economy with 25,000 employees and a payroll exceeding \$1 billion.

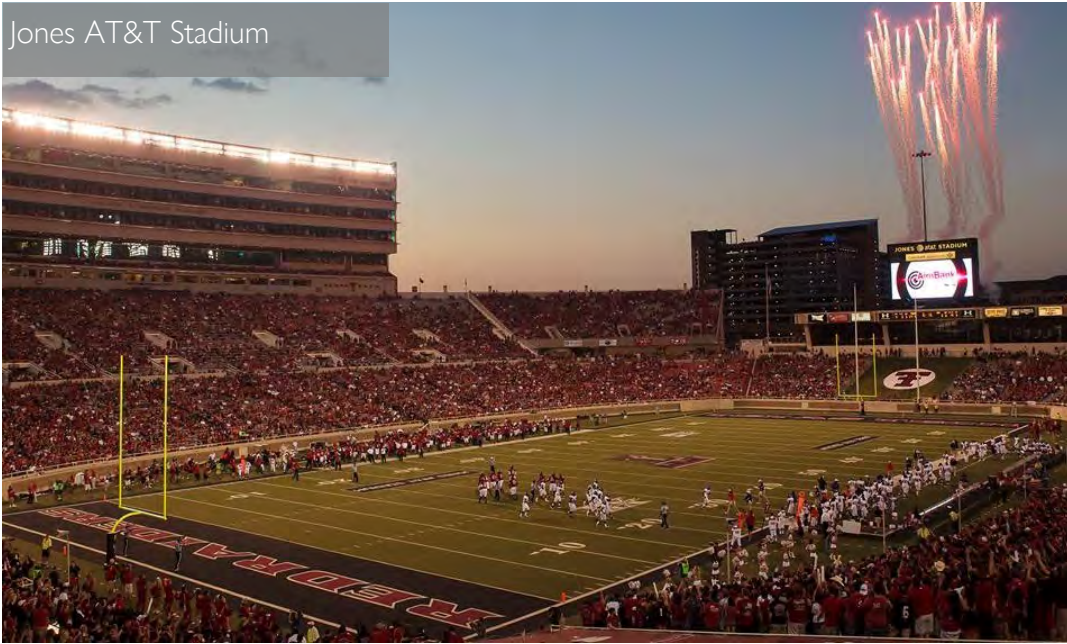


MAJOR EMPLOYERS IN LUBBOCK MSA	# OF EMPLOYEES
TEXAS TECH UNIVERSITY	11,848
TEXAS TECH HEALTH SCIENCES CENTER	7,627
COVENANT HEALTH	6,931
UMC HEALTH SYSTEMS	4,500
UNITED SUPERMARKETS	4,199
LUBBOCK INDEPENDENT SCHOOL DISTRICT	3,527
CITY OF LUBBOCK	2,700
WALMART SUPERCENTER	1,810
FRENSHIP INDEPENDENT SCHOOL DISTRICT	1,180
LUBBOCK COUNTY	1,171



# The Lubbock Market

Jones AT&T Stadium



First Friday Art Trail



Buddy Holly Center for the Performing Arts



4th on Broadway



United Supermarkets Arena







[www.covenant-park.com](http://www.covenant-park.com)



For Leasing Information

**NAIRN**  
MANAGEMENT GROUP

806.771.6341  
justin@nairnmg.com

A project by:



[www.covenant-park.com](http://www.covenant-park.com)